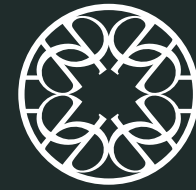


POST

HOTEL & RESIDENCES

BY



ELIE SAAB

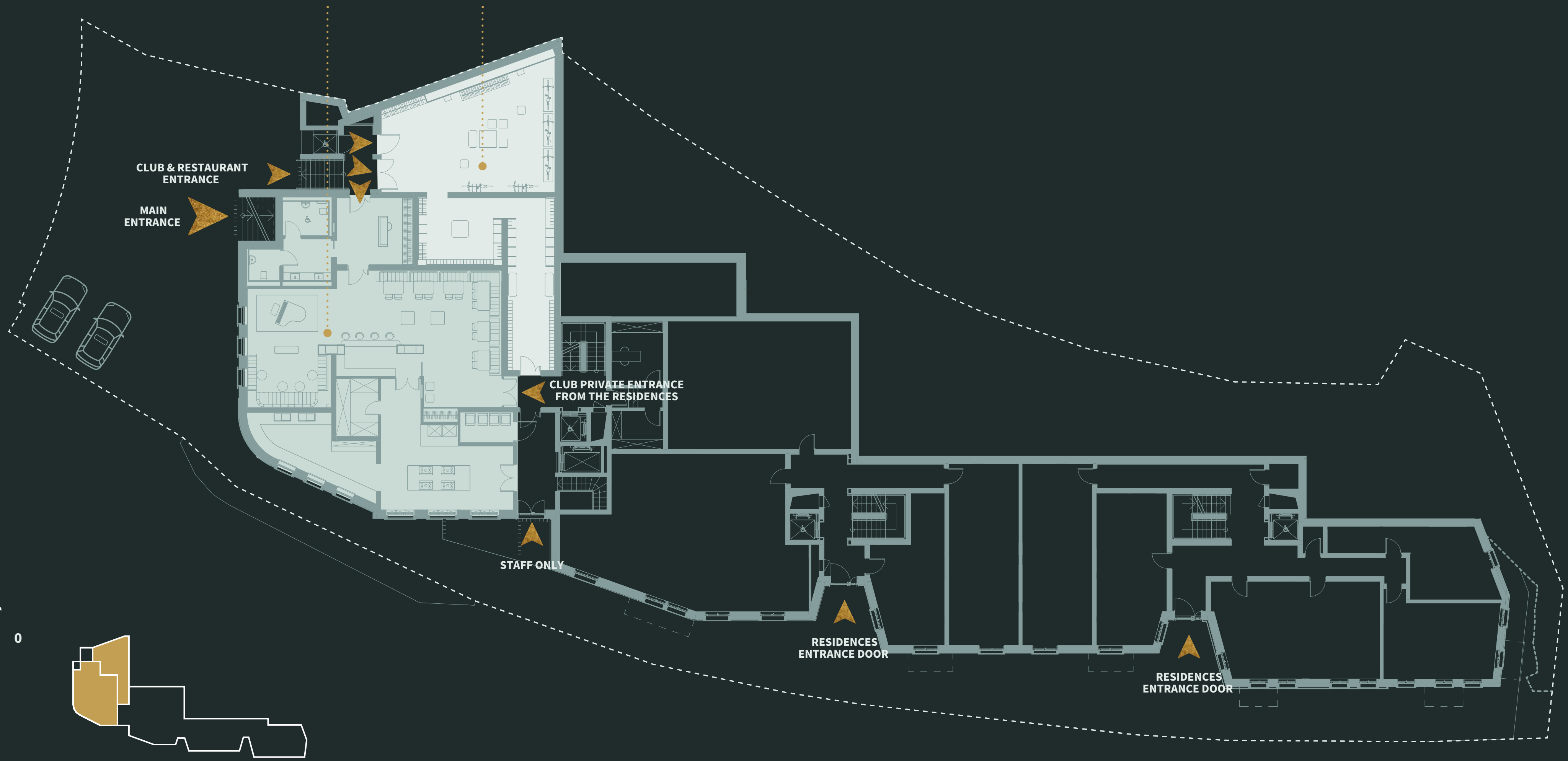


# F L O O R P L A N S

G R U N D R I S S E

Floor  
-1





CLUB & RESTAURANT  
ENTRANCE

MAIN  
ENTRANCE

CLUB PRIVATE ENTRANCE  
FROM THE RESIDENCES

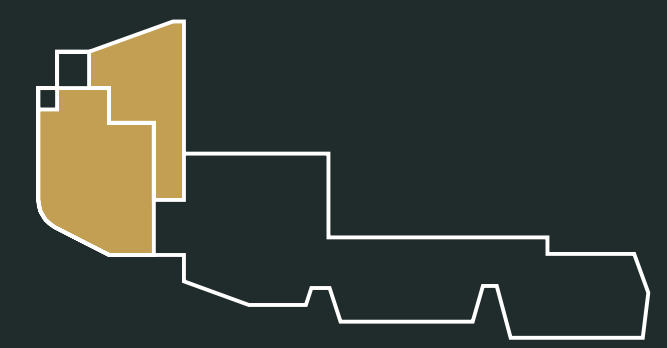
STAFF ONLY

RESIDENCES  
ENTRANCE DOOR

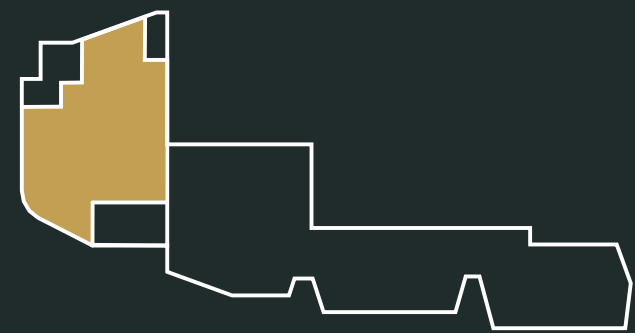
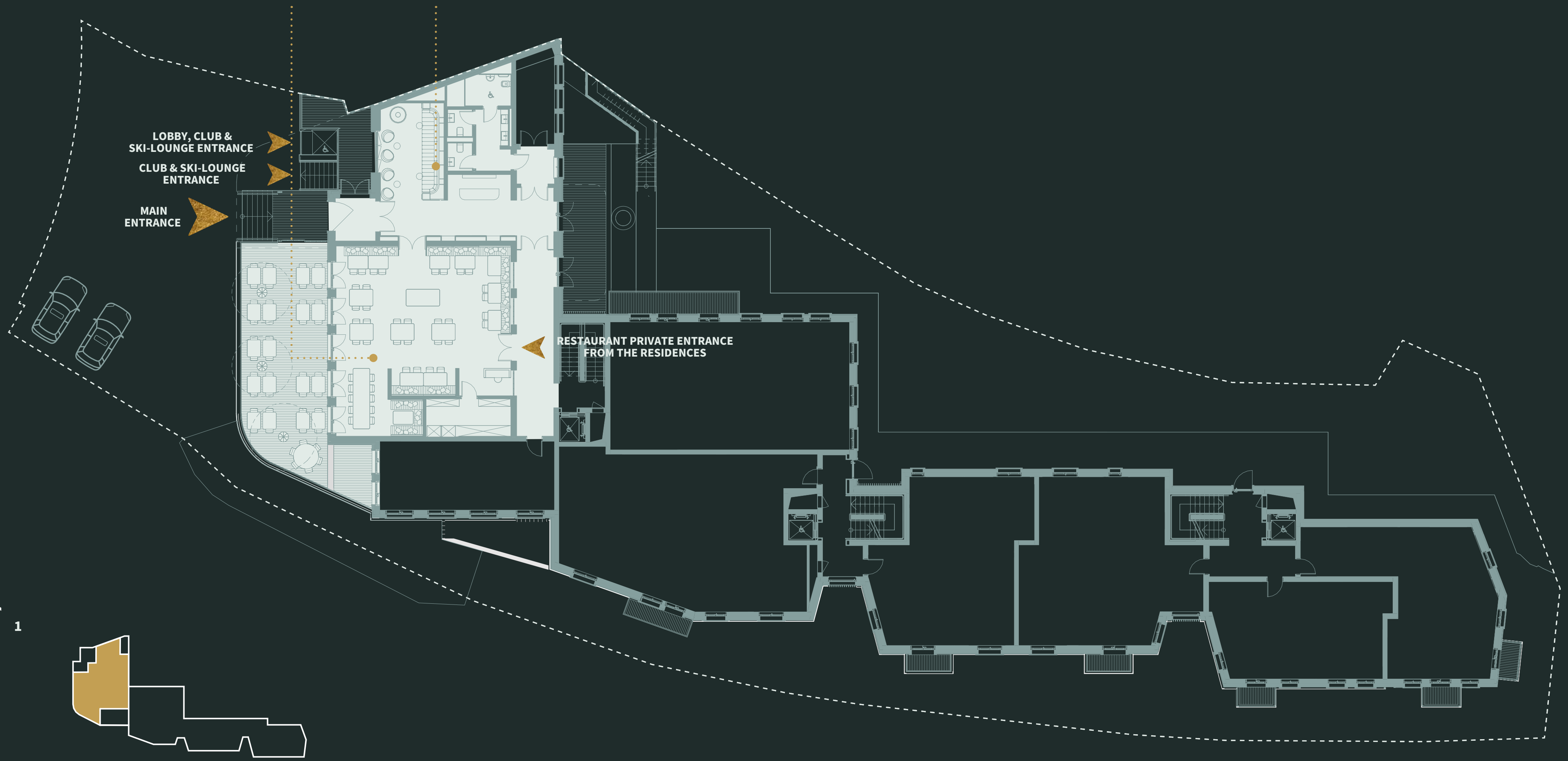
RESIDENCES  
ENTRANCE DOOR



0



Floor 1



# POST

HOTEL & RESIDENCES

BY



ELIE SAAB

# A0.01

00 FLOOR

2.5 APARTMENT



GROSS LEASEABLE AREA

102 SQM



BEDROOMS

1



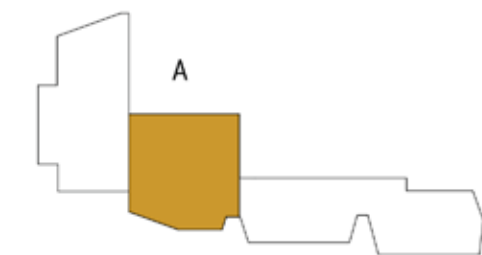
BATHROOMS

1



BALCONY

0 SQM



GF

This publication is only an illustrative basis. A part of the images shown in the document is developed with computer graphics techniques (photorealistic rendering), with reference to details of the façade and elevations, common parts, private parts and interiors of the apartments, for the sole purpose of presenting a hypothesis of future realization / or potential of the various solutions following user customization. Which is why all information, descriptions and images are purely indicative and subject to change. This document does not have contractual value and is not binding for the investment company that holds the rights and information reported. Reproduction and even partial use of texts and images are forbidden without prior authorization.

# POST

HOTEL & RESIDENCES

BY



ELIE SAAB

# A0.02

00 FLOOR

3.5 APARTMENT



GROSS LEASEABLE AREA

207 SQM



BEDROOMS

2



BATHROOMS

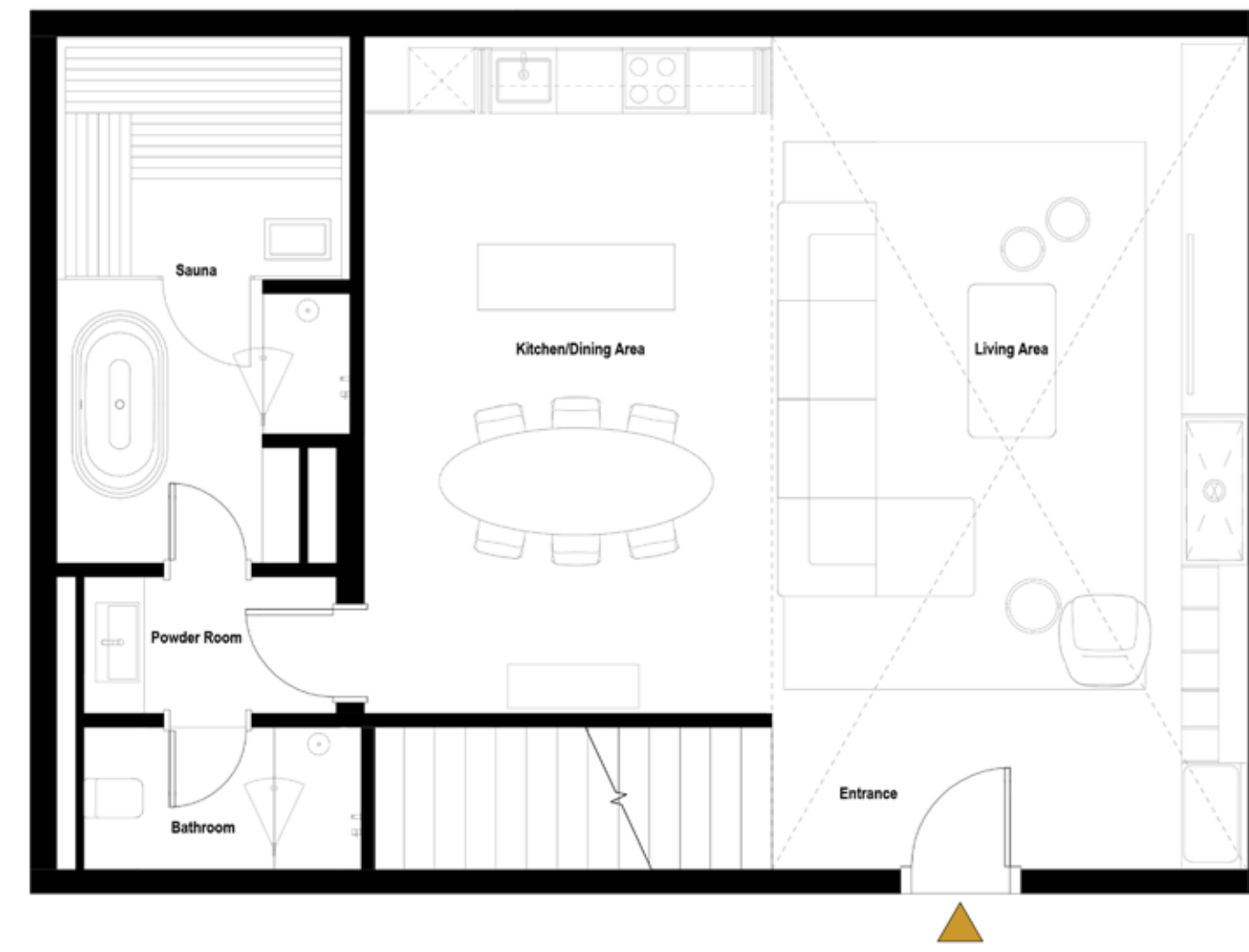
3



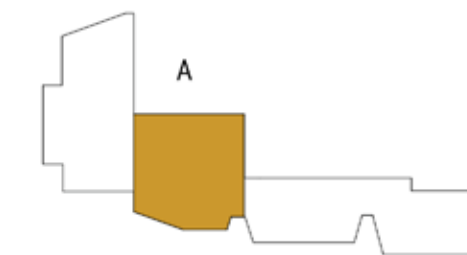
BALCONY

11 SQM

Entrance Level



Upper Level



A002 - UL



A002 - EL



FF  
GF

This publication is only an illustrative basis. A part of the images shown in the document is developed with computer graphics techniques (photorealistic rendering), with reference to details of the façade and elevations, common parts, private parts and interiors of the apartments, for the sole purpose of presenting a hypothesis of future realization / or potential of the various solutions following user customization. Which is why all information, descriptions and images are purely indicative and subject to change. This document does not have contractual value and is not binding for the investment company that holds the rights and information reported. Reproduction and even partial use of texts and images are forbidden without prior authorization.

# POST

HOTEL & RESIDENCES

BY



ELIE SAAB

# A1.01

01 FLOOR

2.5 APARTMENT



GROSS LEASEABLE AREA

122 SQM



BEDROOMS

1



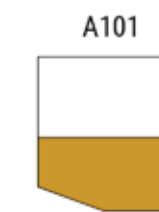
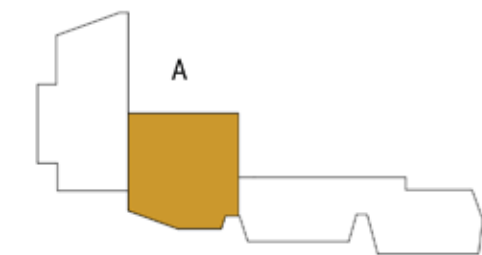
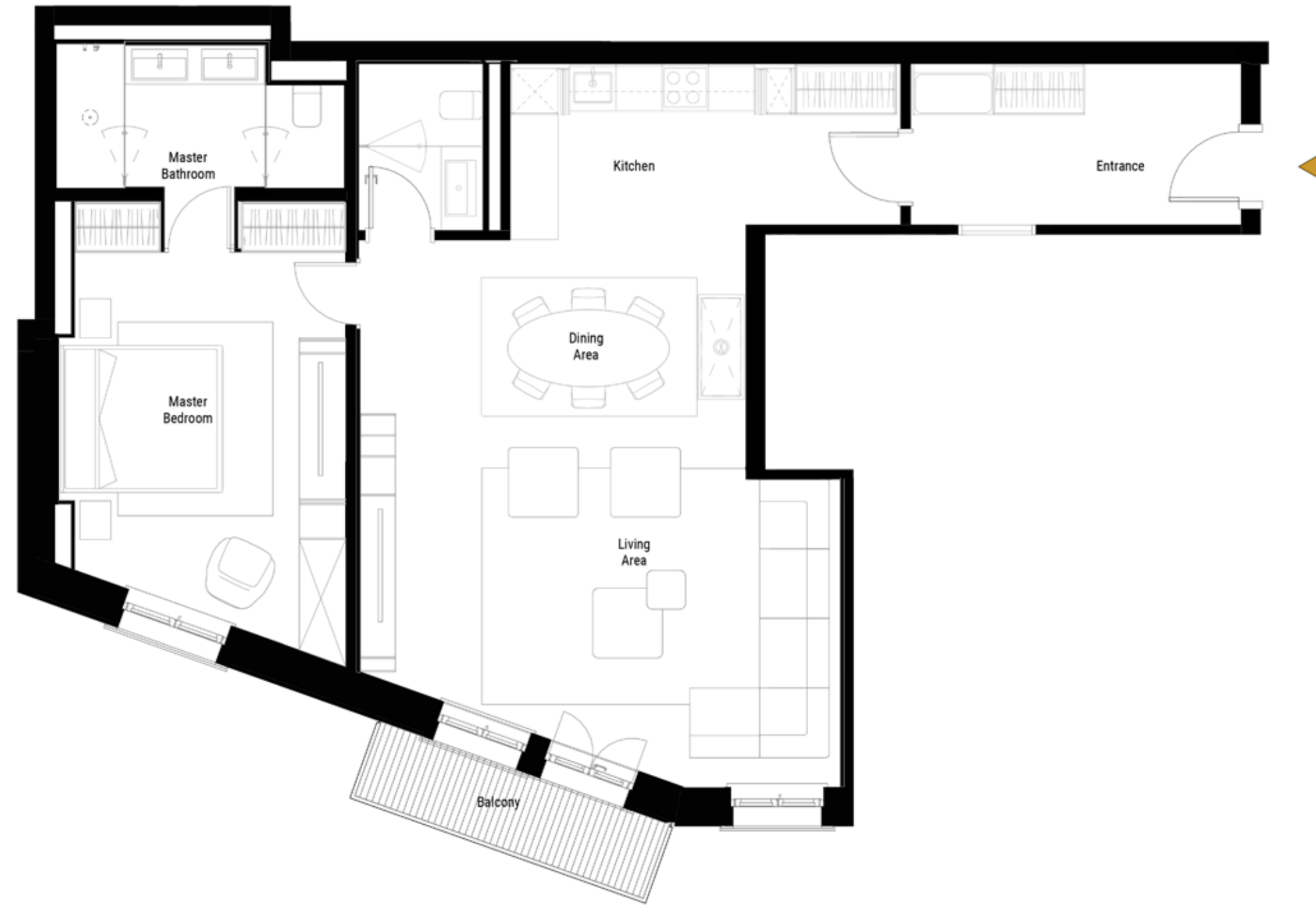
BATHROOMS

2



BALCONY

4 SQM



GF

This publication is only an illustrative basis. A part of the images shown in the document is developed with computer graphics techniques (photorealistic rendering), with reference to details of the façade and elevations, common parts, private parts and interiors of the apartments, for the sole purpose of presenting a hypothesis of future realization / or potential of the various solutions following user customization. Which is why all information, descriptions and images are purely indicative and subject to change. This document does not have contractual value and is not binding for the investment company that holds the rights and information reported. Reproduction and even partial use of texts and images are forbidden without prior authorization.



# POST

HOTEL & RESIDENCES

BY



ELIE SAAB

# B1.01

01 FLOOR

3.5 APARTMENT



GROSS LEASEABLE AREA

107 SQM



BEDROOMS

2



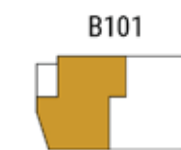
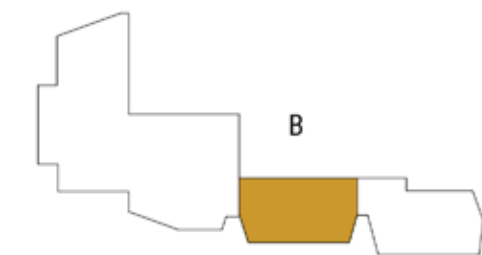
BATHROOMS

3



BALCONY

3 SQM



This publication is only an illustrative basis. A part of the images shown in the document is developed with computer graphics techniques (photorealistic rendering), with reference to details of the façade and elevations, common parts, private parts and interiors of the apartments, for the sole purpose of presenting a hypothesis of future realization / or potential of the various solutions following user customization. Which is why all information, descriptions and images are purely indicative and subject to change. This document does not have contractual value and is not binding for the investment company that holds the rights and information reported. Reproduction and even partial use of texts and images are forbidden without prior authorization.

# POST

HOTEL & RESIDENCES

BY



ELIE SAAB

# B 1.02

01 FLOOR

3.5 APARTMENT



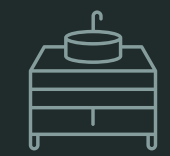
GROSS LEASEABLE AREA

120 SQM



BEDROOMS

2



BATHROOMS

3



BALCONY

3 SQM



This publication is only an illustrative basis. A part of the images shown in the document is developed with computer graphics techniques (photorealistic rendering), with reference to details of the façade and elevations, common parts, private parts and interiors of the apartments, for the sole purpose of presenting a hypothesis of future realization / or potential of the various solutions following user customization. Which is why all information, descriptions and images are purely indicative and subject to change. This document does not have contractual value and is not binding for the investment company that holds the rights and information reported. Reproduction and even partial use of texts and images are forbidden without prior authorization.

# POST

HOTEL & RESIDENCES

BY



ELIE SAAB

# C1.01

01 FLOOR

2.5 APARTMENT



GROSS LEASEABLE AREA

98 SQM



BEDROOMS

1



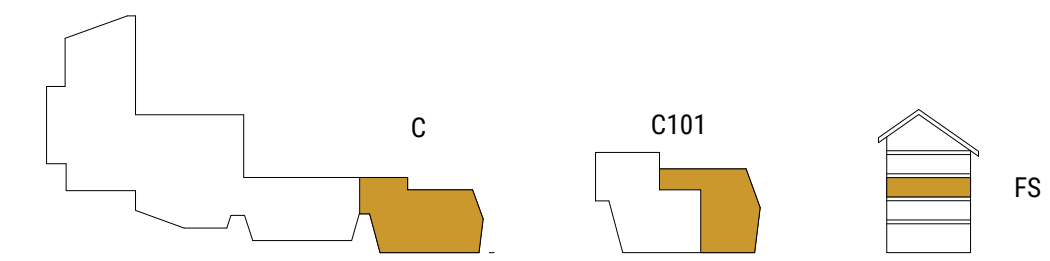
BATHROOMS

2



BALCONY

5 SQM



This publication is only an illustrative basis. A part of the images shown in the document is developed with computer graphics techniques (photorealistic rendering), with reference to details of the façade and elevations, common parts, private parts and interiors of the apartments, for the sole purpose of presenting a hypothesis of future realization / or potential of the various solutions following user customization. Which is why all information, descriptions and images are purely indicative and subject to change. This document does not have contractual value and is not binding for the investment company that holds the rights and information reported. Reproduction and even partial use of texts and images are forbidden without prior authorization.

# POST

HOTEL & RESIDENCES

BY



ELIE SAAB

# C1.02

01 FLOOR

2.5 APARTMENT



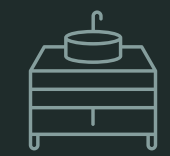
GROSS LEASEABLE AREA

78 SQM



BEDROOMS

1



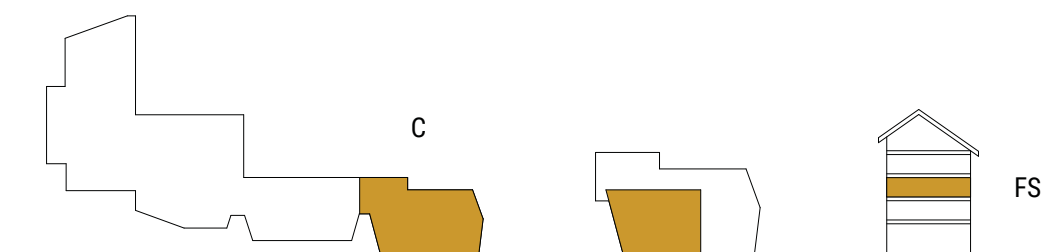
BATHROOMS

2



BALCONY

2 SQM



This publication is only an illustrative basis. A part of the images shown in the document is developed with computer graphics techniques (photorealistic rendering), with reference to details of the façade and elevations, common parts, private parts and interiors of the apartments, for the sole purpose of presenting a hypothesis of future realization / or potential of the various solutions following user customization. Which is why all information, descriptions and images are purely indicative and subject to change. This document does not have contractual value and is not binding for the investment company that holds the rights and information reported. Reproduction and even partial use of texts and images are forbidden without prior authorization.

# POST

HOTEL & RESIDENCES

BY



ELIE SAAB

# A2.01

02 FLOOR

2.5 APARTMENT



GROSS LEASEABLE AREA

124 SQM



BEDROOMS

1



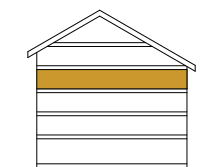
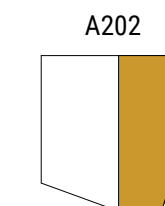
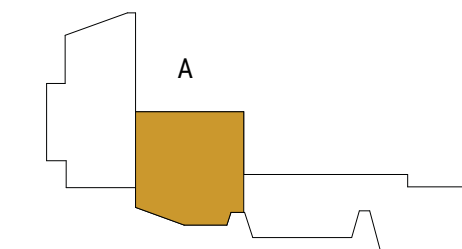
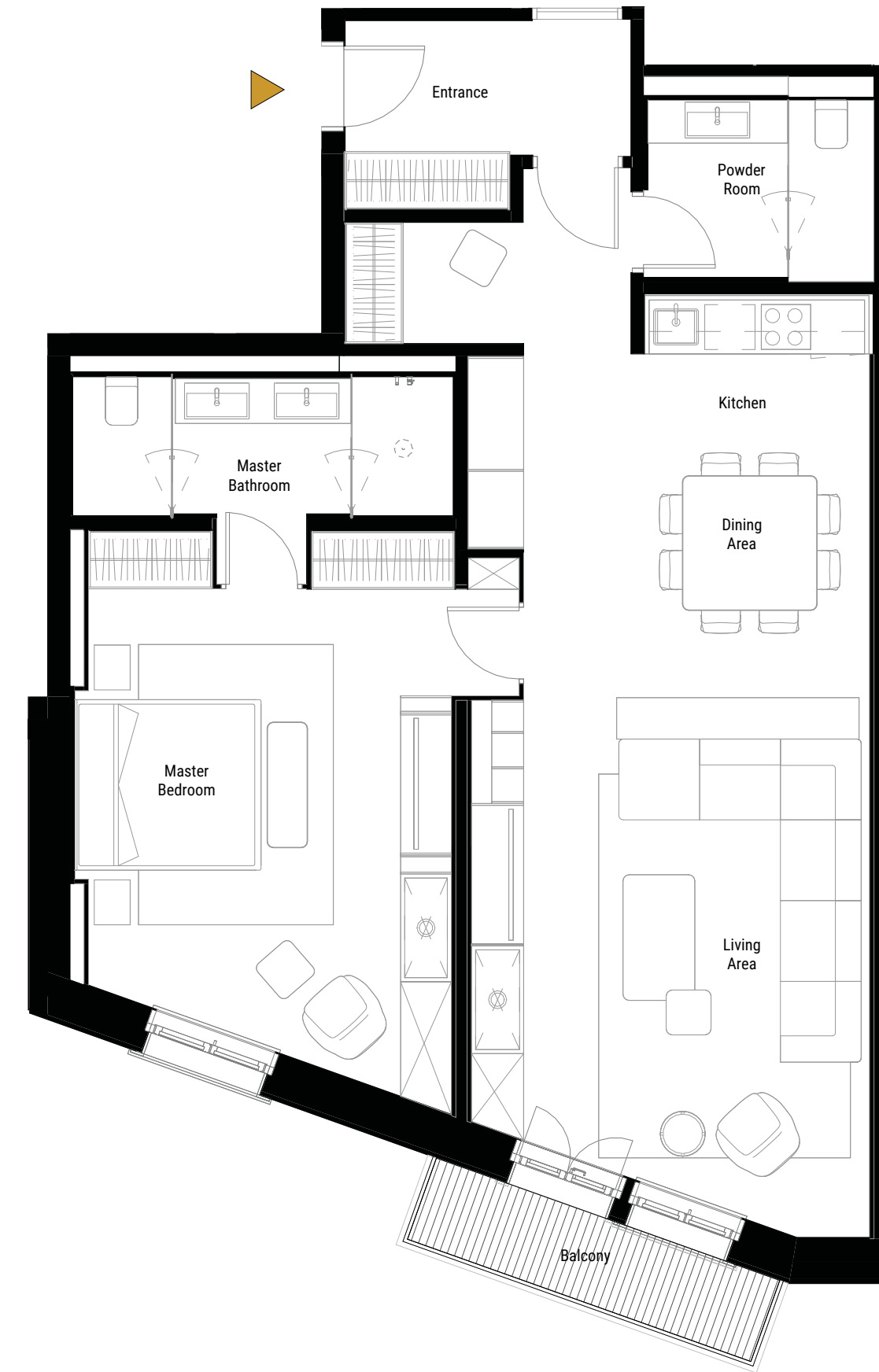
BATHROOMS

2



BALCONY

4 SQM



SF

This publication is only an illustrative basis. A part of the images shown in the document is developed with computer graphics techniques (photorealistic rendering), with reference to details of the façade and elevations, common parts, private parts and interiors of the apartments, for the sole purpose of presenting a hypothesis of future realization / or potential of the various solutions following user customization. Which is why all information, descriptions and images are purely indicative and subject to change. This document does not have contractual value and is not binding for the investment company that holds the rights and information reported. Reproduction and even partial use of texts and images are forbidden without prior authorization.

# POST

HOTEL & RESIDENCES

BY



ELIE SAAB

# A2.02

02 FLOOR

3.5 APARTMENT



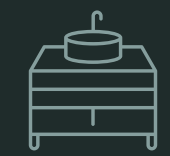
GROSS LEASEABLE AREA

155 SQM



BEDROOMS

2



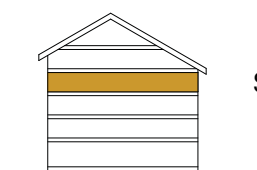
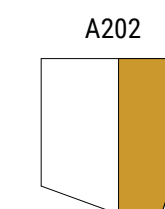
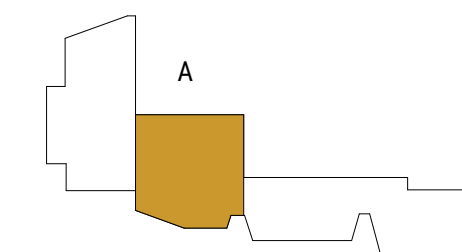
BATHROOMS

3



BALCONY

0 SQM



SF

This publication is only an illustrative basis. A part of the images shown in the document is developed with computer graphics techniques (photorealistic rendering), with reference to details of the façade and elevations, common parts, private parts and interiors of the apartments, for the sole purpose of presenting a hypothesis of future realization / or potential of the various solutions following user customization. Which is why all information, descriptions and images are purely indicative and subject to change. This document does not have contractual value and is not binding for the investment company that holds the rights and information reported. Reproduction and even partial use of texts and images are forbidden without prior authorization.

# POST

HOTEL & RESIDENCES

BY



ELIE SAAB

# B 2.01

02 FLOOR

4.5 APARTMENT



GROSS LEASEABLE AREA

206 SQM



BEDROOMS

3



BATHROOMS

4



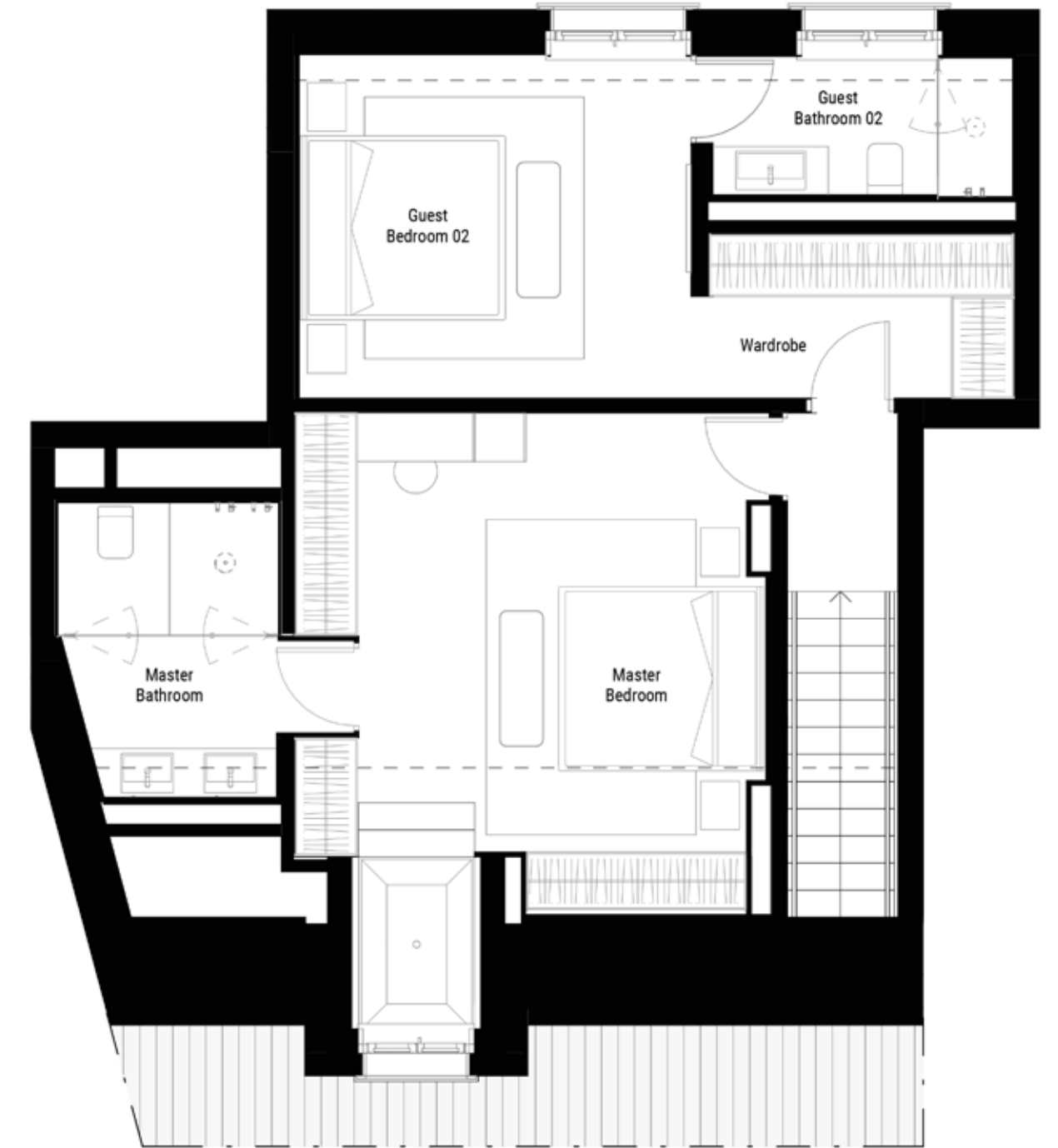
BALCONY

3 SQM

Entrance Level



Upper Level



This publication is only an illustrative basis. A part of the images shown in the document is developed with computer graphics techniques (photorealistic rendering), with reference to details of the façade and elevations, common parts, private parts and interiors of the apartments, for the sole purpose of presenting a hypothesis of future realization / or potential of the various solutions following user customization. Which is why all information, descriptions and images are purely indicative and subject to change. This document does not have contractual value and is not binding for the investment company that holds the rights and information reported. Reproduction and even partial use of texts and images are forbidden without prior authorization.

# POST

HOTEL & RESIDENCES

BY



ELIE SAAB

# B 2.02

02 FLOOR

4.5 APARTMENT



GROSS LEASEABLE AREA

224 SQM



BEDROOMS

3



BATHROOMS

4



BALCONY

3 SQM

Entrance Level



Upper Level



This publication is only an illustrative basis. A part of the images shown in the document is developed with computer graphics techniques (photorealistic rendering), with reference to details of the façade and elevations, common parts, private parts and interiors of the apartments, for the sole purpose of presenting a hypothesis of future realization / or potential of the various solutions following user customization. Which is why all information, descriptions and images are purely indicative and subject to change. This document does not have contractual value and is not binding for the investment company that holds the rights and information reported. Reproduction and even partial use of texts and images are forbidden without prior authorization.



# POST

HOTEL & RESIDENCES

BY



ELIE SAAB

# C2.01

02 FLOOR

2.5 APARTMENT



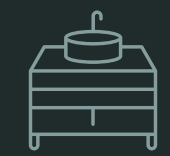
GROSS LEASEABLE AREA

171 SQM



BEDROOMS

1



BATHROOMS

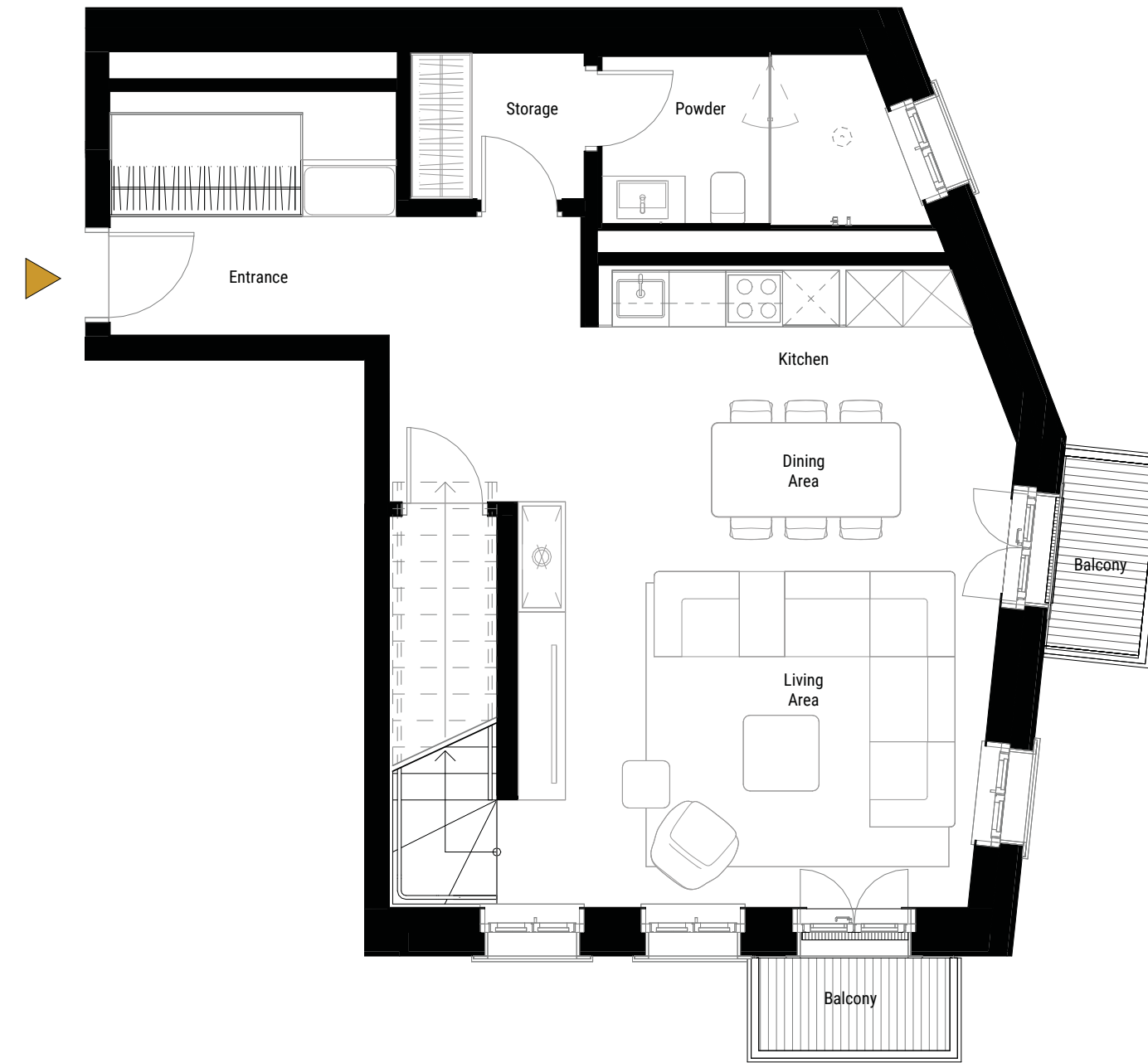
2



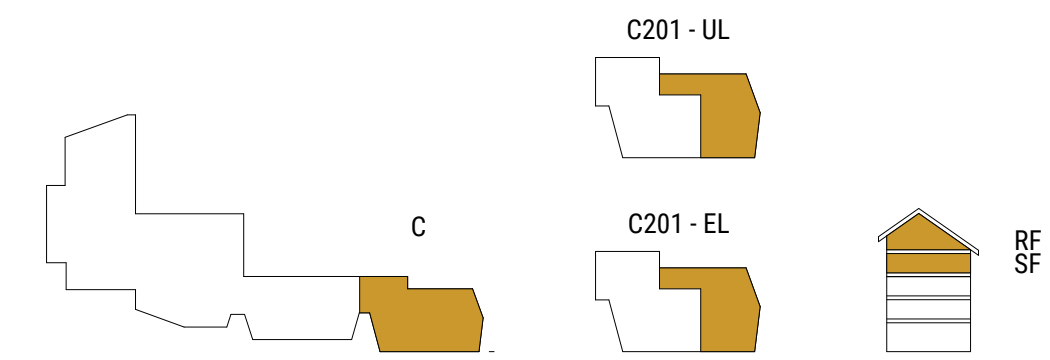
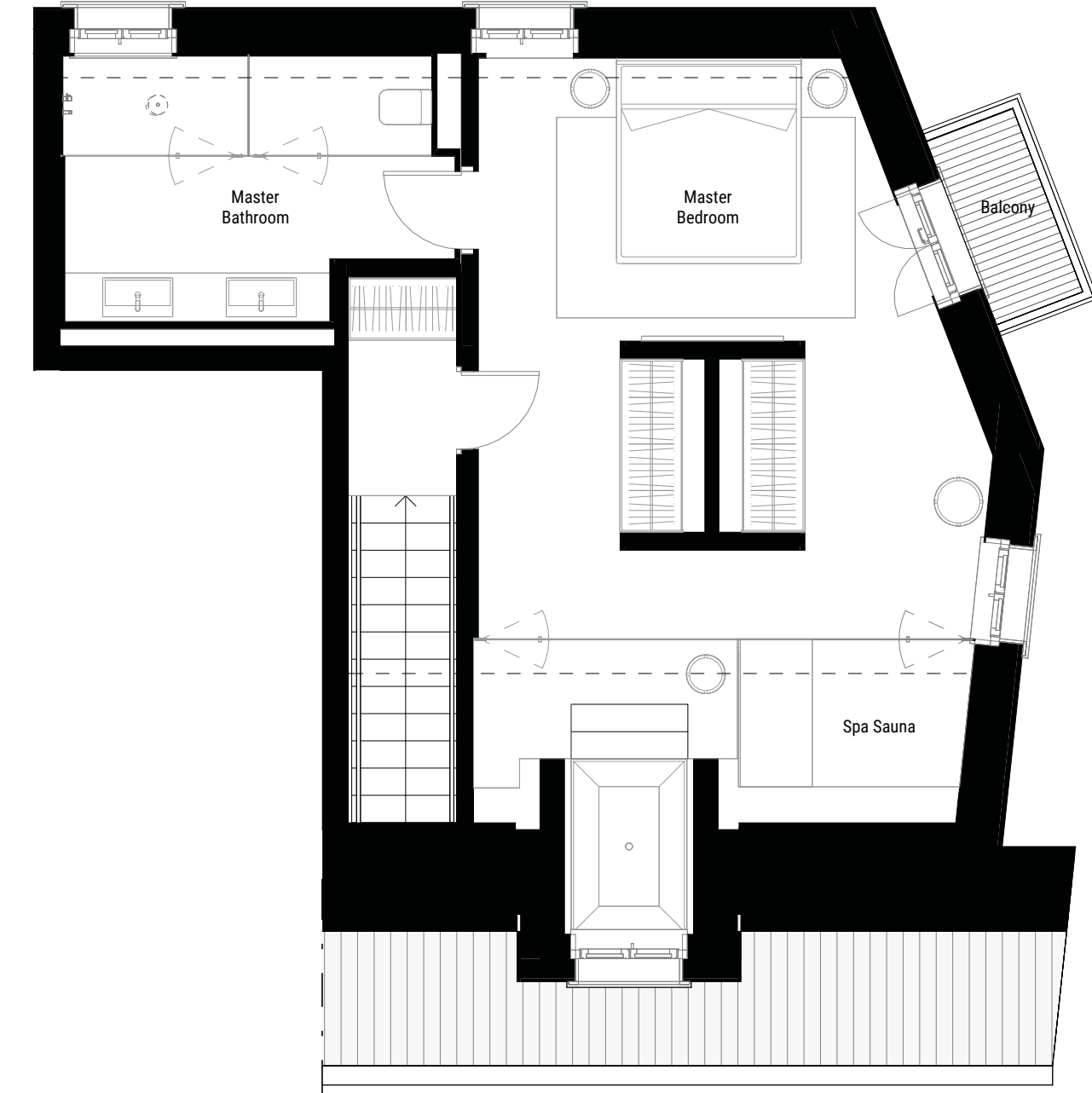
BALCONY

7 SQM

Entrance Level



Upper Level



This publication is only an illustrative basis. A part of the images shown in the document is developed with computer graphics techniques (photorealistic rendering), with reference to details of the façade and elevations, common parts, private parts and interiors of the apartments, for the sole purpose of presenting a hypothesis of future realization / or potential of the various solutions following user customization. Which is why all information, descriptions and images are purely indicative and subject to change. This document does not have contractual value and is not binding for the investment company that holds the rights and information reported. Reproduction and even partial use of texts and images are forbidden without prior authorization.

# POST

HOTEL & RESIDENCES

BY



ELIE SAAB

# C2.02

02 FLOOR

2.5 APARTMENT



GROSS LEASEABLE AREA

191 SQM



BEDROOMS

1



BATHROOMS

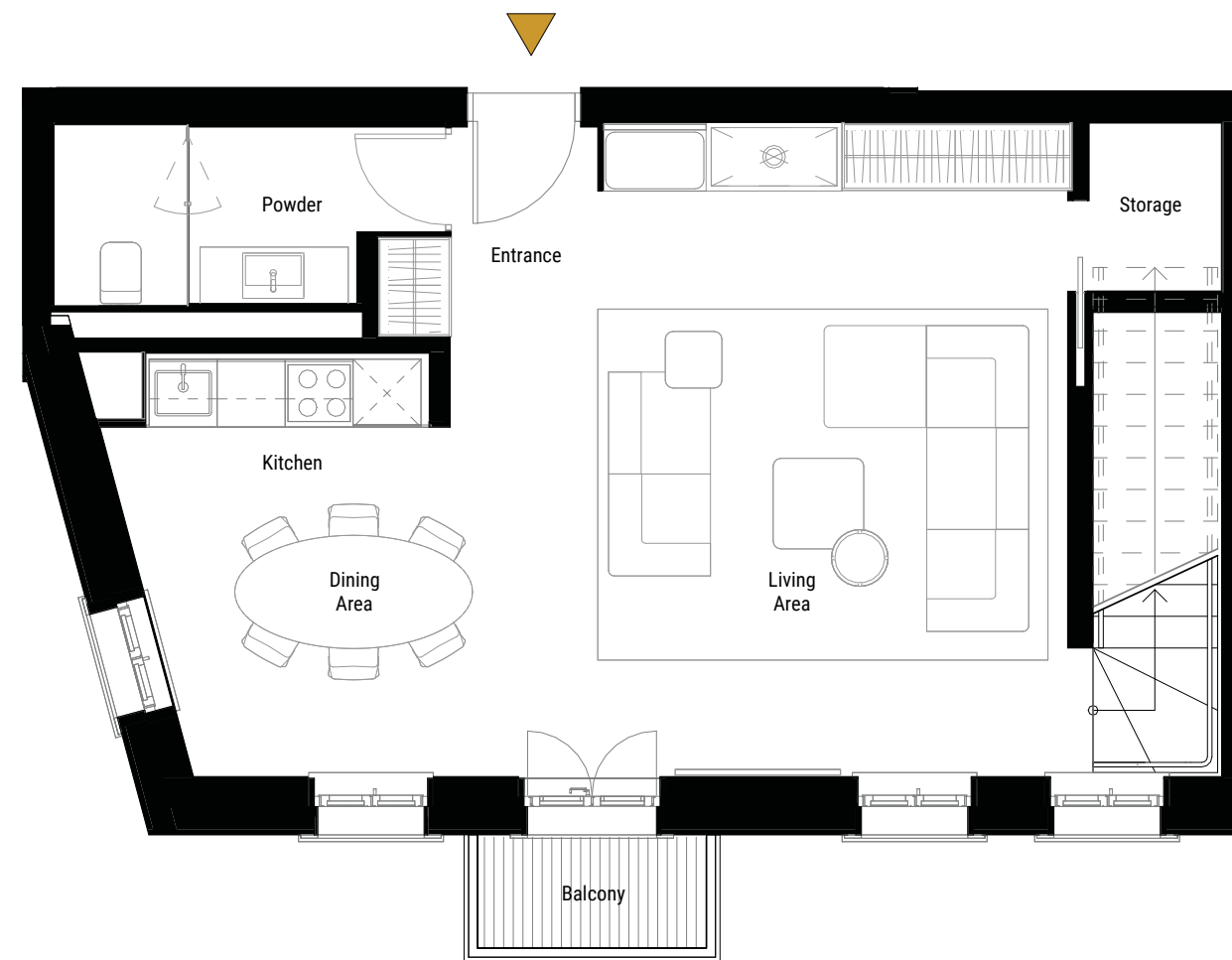
2



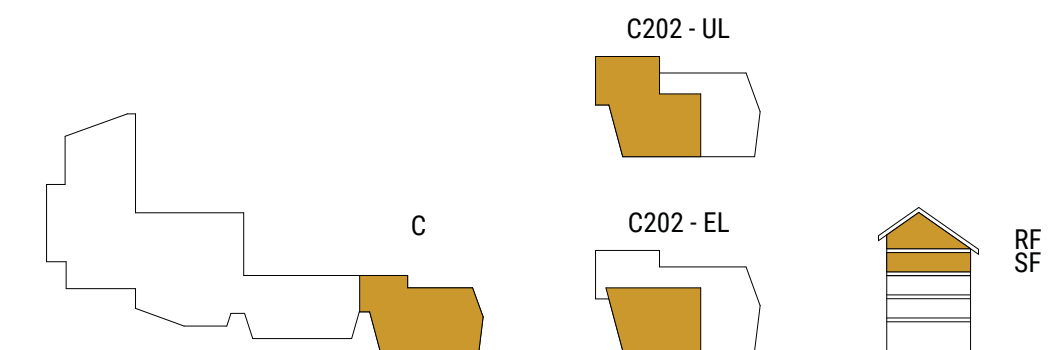
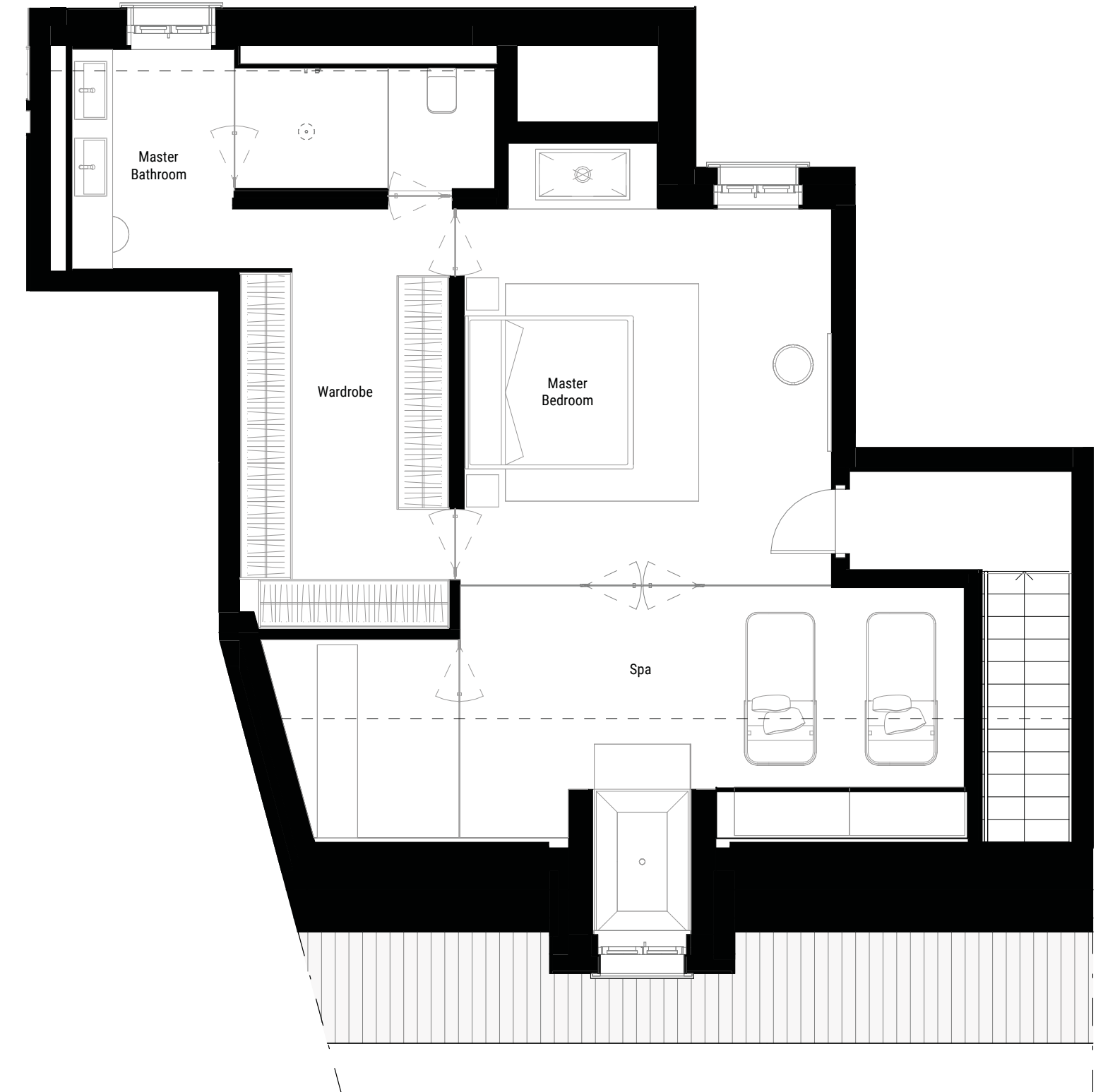
BALCONY

2 SQM

Entrance Level



Upper Level



This publication is only an illustrative basis. A part of the images shown in the document is developed with computer graphics techniques (photorealistic rendering), with reference to details of the façade and elevations, common parts, private parts and interiors of the apartments, for the sole purpose of presenting a hypothesis of future realization / or potential of the various solutions following user customization. Which is why all information, descriptions and images are purely indicative and subject to change. This document does not have contractual value and is not binding for the investment company that holds the rights and information reported. Reproduction and even partial use of texts and images are forbidden without prior authorization.

# POST

HOTEL & RESIDENCES

BY



ELIE SAAB

# A3.01

03 FLOOR

4.5 APARTMENT



GROSS LEASEABLE AREA

215 SQM



BEDROOMS

3



BATHROOMS

4

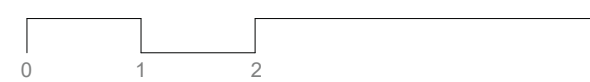
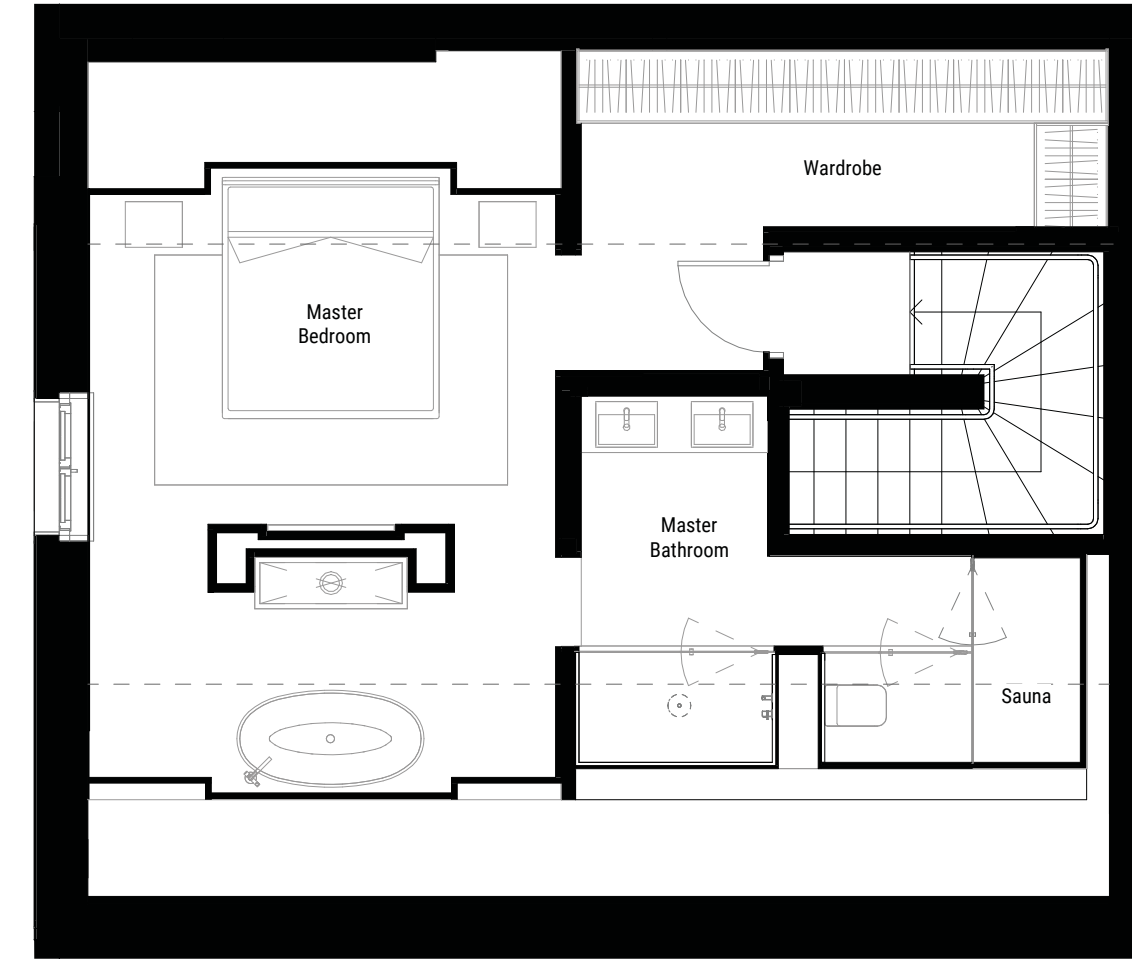


BALCONY

2 SQM



Upper Level



This publication is only an illustrative basis. A part of the images shown in the document is developed with computer graphics techniques (photorealistic rendering), with reference to details of the façade and elevations, common parts, private parts and interiors of the apartments, for the sole purpose of presenting a hypothesis of future realization / or potential of the various solutions following user customization. Which is why all information, descriptions and images are purely indicative and subject to change. This document does not have contractual value and is not binding for the investment company that holds the rights and information reported. Reproduction and even partial use of texts and images are forbidden without prior authorization.

# POST

HOTEL & RESIDENCES

BY



ELIE SAAB

# A3.02

03 FLOOR

3.5 APARTMENT



GROSS LEASEABLE AREA

214 SQM



BEDROOMS

2



BATHROOMS

3



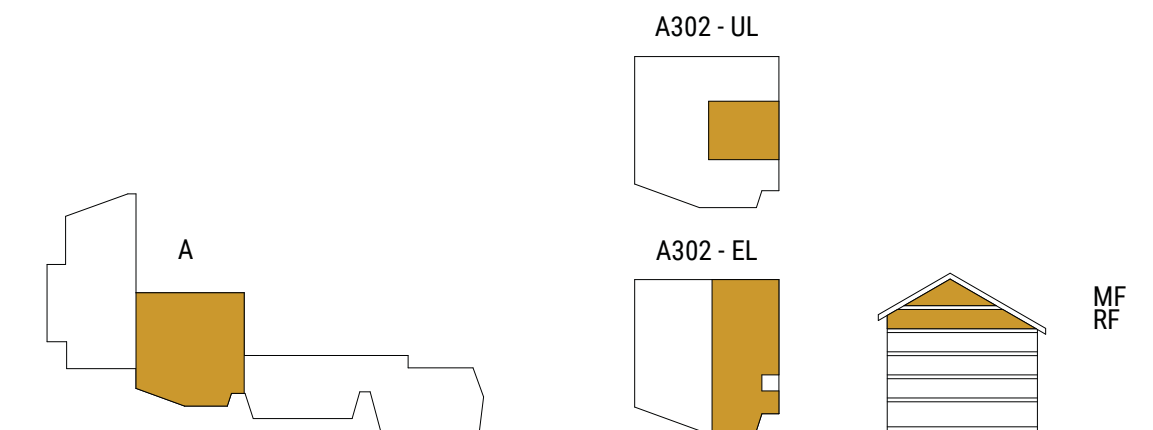
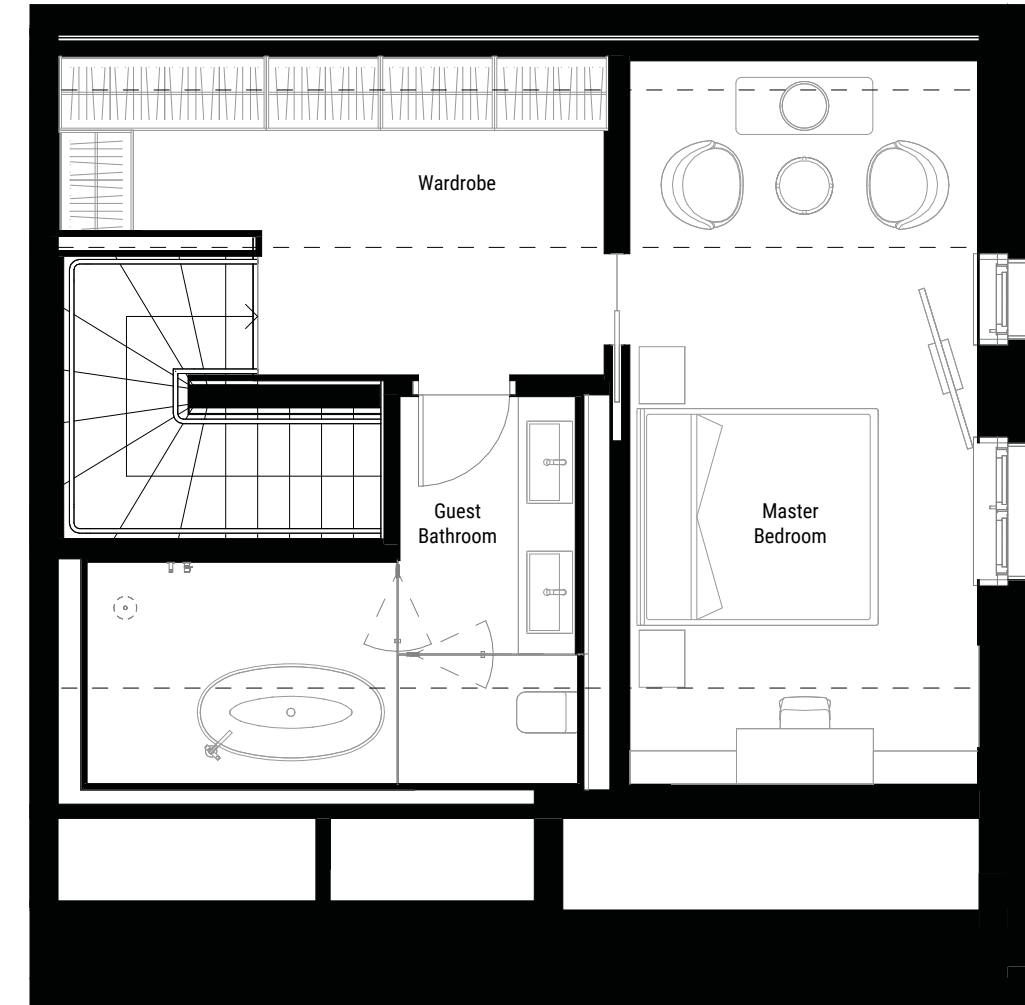
BALCONY

4 SQM

Entrance Level



Upper Level



This publication is only an illustrative basis. A part of the images shown in the document is developed with computer graphics techniques (photorealistic rendering), with reference to details of the façade and elevations, common parts, private parts and interiors of the apartments, for the sole purpose of presenting a hypothesis of future realization / or potential of the various solutions following user customization. Which is why all information, descriptions and images are purely indicative and subject to change. This document does not have contractual value and is not binding for the investment company that holds the rights and information reported. Reproduction and even partial use of texts and images are forbidden without prior authorization.

# POST

HOTEL & RESIDENCES

BY



ELIE SAAB

# H3.01

03 FLOOR

2.5 APARTMENT



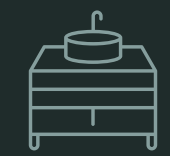
GROSS LEASEABLE AREA

113 SQM



BEDROOMS

1



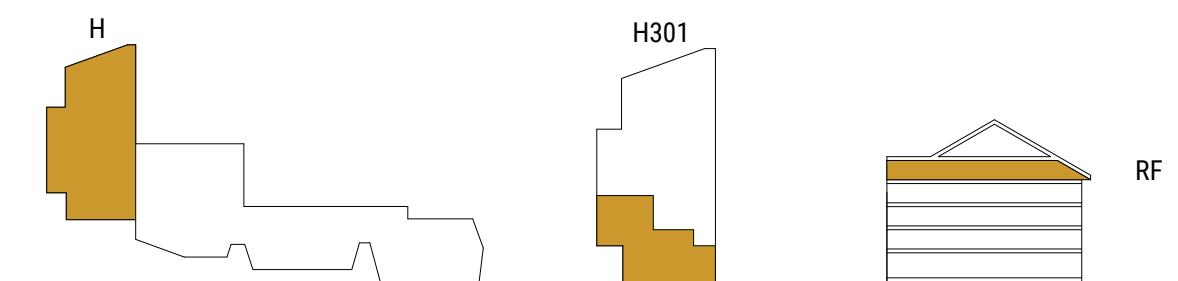
BATHROOMS

2



BALCONY

0 SQM



This publication is only an illustrative basis. A part of the images shown in the document is developed with computer graphics techniques (photorealistic rendering), with reference to details of the façade and elevations, common parts, private parts and interiors of the apartments, for the sole purpose of presenting a hypothesis of future realization / or potential of the various solutions following user customization. Which is why all information, descriptions and images are purely indicative and subject to change. This document does not have contractual value and is not binding for the investment company that holds the rights and information reported. Reproduction and even partial use of texts and images are forbidden without prior authorization.

# POST

HOTEL & RESIDENCES

BY



ELIE SAAB

# H3.02

03 FLOOR

3.5 APARTMENT



GROSS LEASEABLE AREA

132 SQM



BEDROOMS

2



BATHROOMS

3



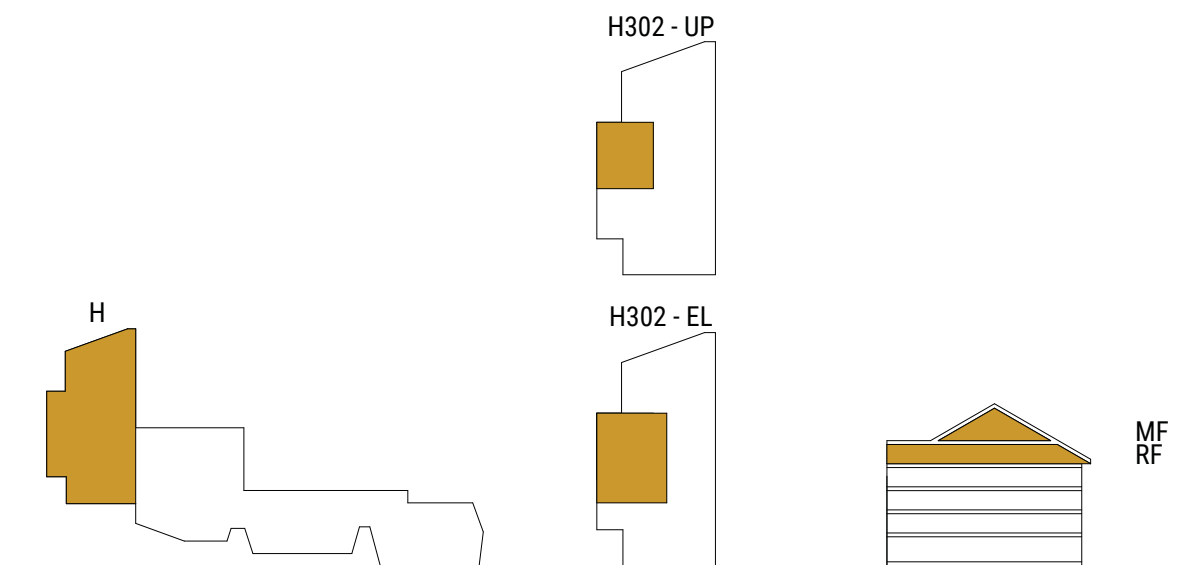
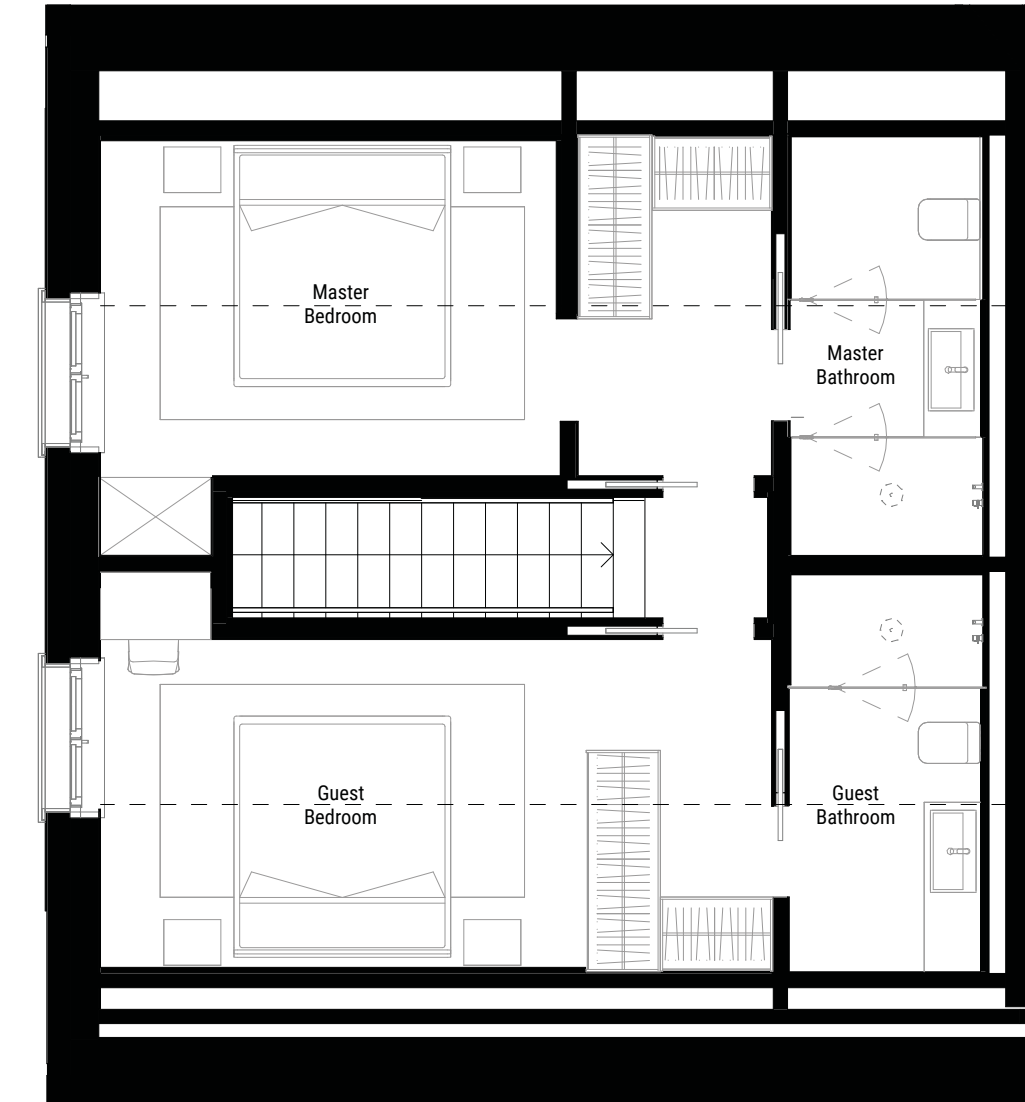
BALCONY

0 SQM

Entrance Level



Upper Level



This publication is only an illustrative basis. A part of the images shown in the document is developed with computer graphics techniques (photorealistic rendering), with reference to details of the façade and elevations, common parts, private parts and interiors of the apartments, for the sole purpose of presenting a hypothesis of future realization / or potential of the various solutions following user customization. Which is why all information, descriptions and images are purely indicative and subject to change. This document does not have contractual value and is not binding for the investment company that holds the rights and information reported. Reproduction and even partial use of texts and images are forbidden without prior authorization.

# POST

HOTEL & RESIDENCES

BY



ELIE SAAB

# H3.03

03 FLOOR

2.5 APARTMENT



GROSS LEASEABLE AREA

79 SQM



BEDROOMS

1



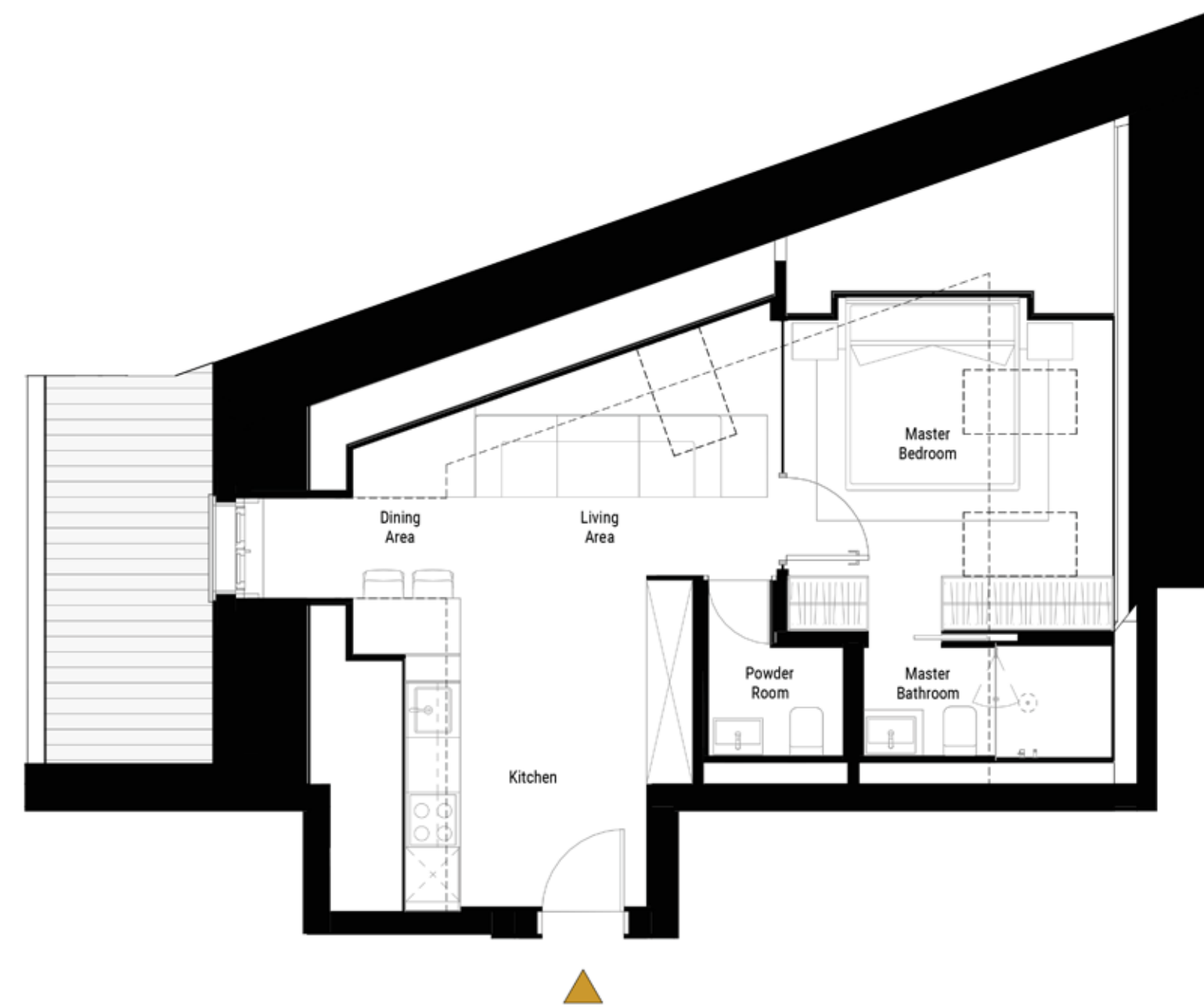
BATHROOMS

2



BALCONY

0 SQM



This publication is only an illustrative basis. A part of the images shown in the document is developed with computer graphics techniques (photorealistic rendering), with reference to details of the façade and elevations, common parts, private parts and interiors of the apartments, for the sole purpose of presenting a hypothesis of future realization / or potential of the various solutions following user customization. Which is why all information, descriptions and images are purely indicative and subject to change. This document does not have contractual value and is not binding for the investment company that holds the rights and information reported. Reproduction and even partial use of texts and images are forbidden without prior authorization.

# POST

HOTEL & RESIDENCES

BY



ELIE SAAB

# H3.04

03 FLOOR

2.5 APARTMENT



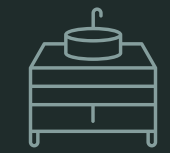
GROSS LEASEABLE AREA

112 SQM



BEDROOMS

1



BATHROOMS

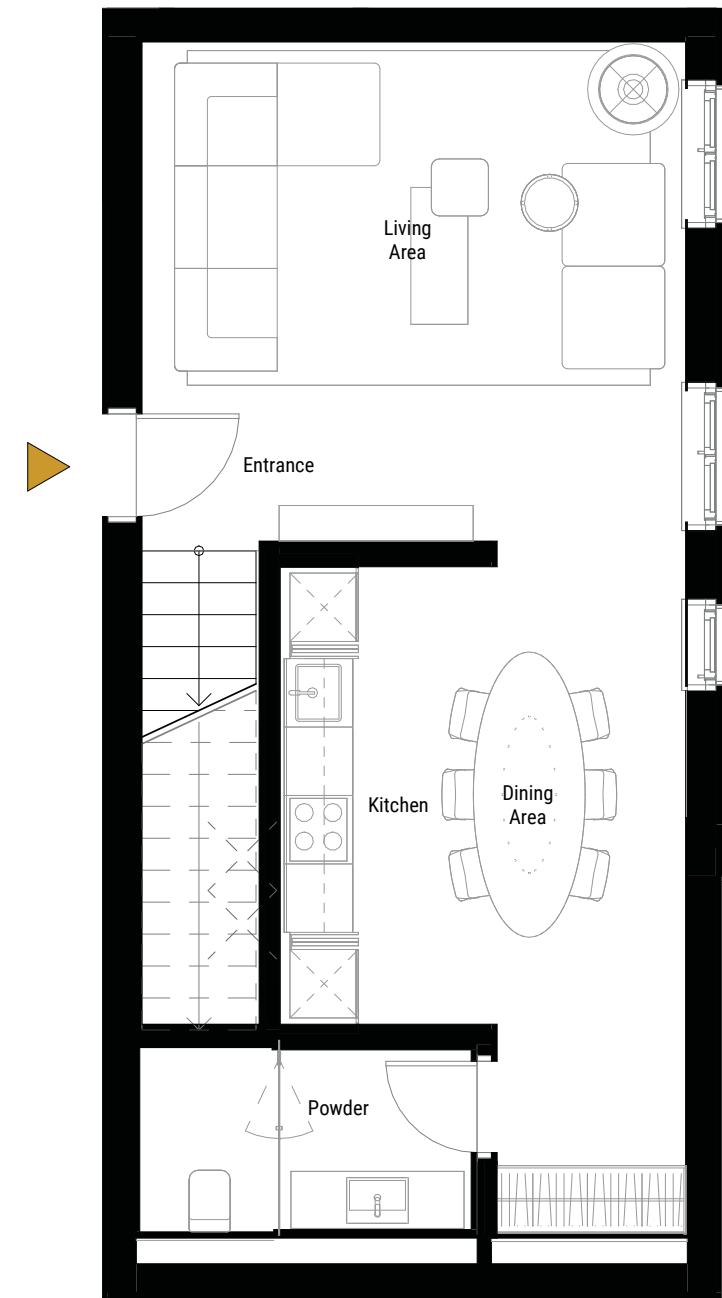
2



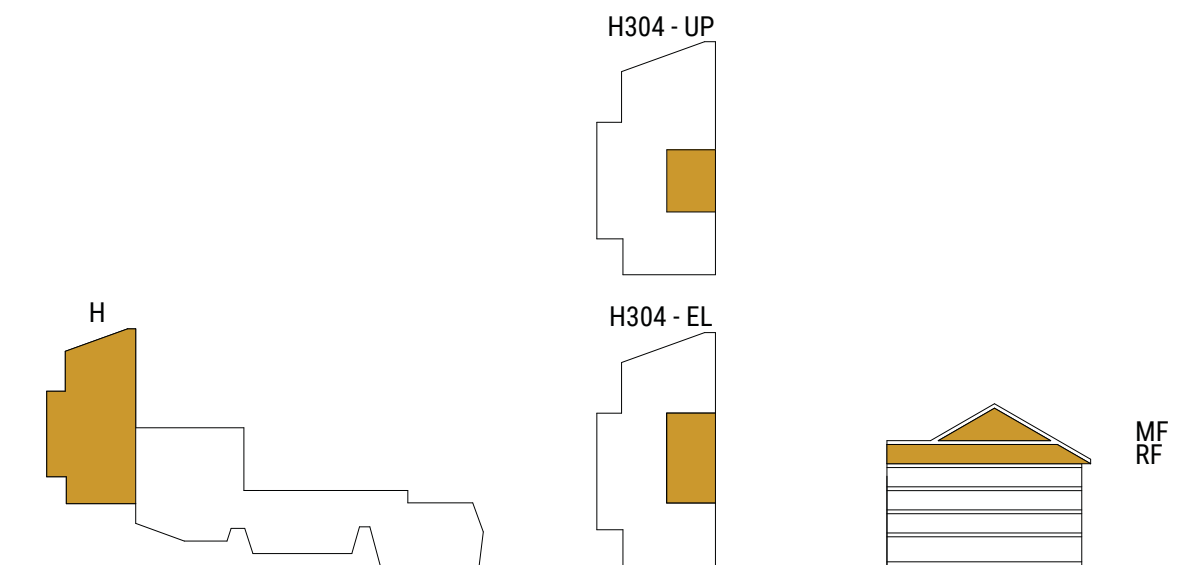
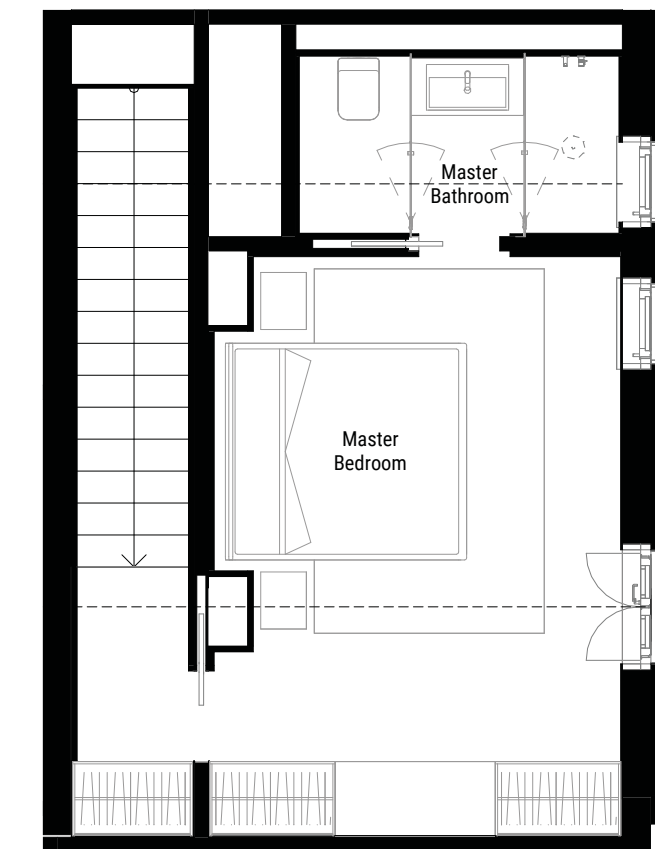
BALCONY

3 SQM

Entrance Level



Upper Level



This publication is only an illustrative basis. A part of the images shown in the document is developed with computer graphics techniques (photorealistic rendering), with reference to details of the façade and elevations, common parts, private parts and interiors of the apartments, for the sole purpose of presenting a hypothesis of future realization / or potential of the various solutions following user customization. Which is why all information, descriptions and images are purely indicative and subject to change. This document does not have contractual value and is not binding for the investment company that holds the rights and information reported. Reproduction and even partial use of texts and images are forbidden without prior authorization.





With over 20 years of experience and a global presence, A++ Group is an internationally recognized network of 50 companies specializing in Master Planning, Architecture, Interior Design, Product Design, Procurement, and Luxury Branding. Under the leadership of Paolo Colombo as Managing Director and Carlo Colombo as Creative Director, the Group combines a passion for architecture with an entrepreneurial vision, developing innovative and exclusive projects worldwide.

As a leader in Branded Real Estate, A++ Group is committed to creating spaces that redefine luxury living. Its philosophy, “WE ARE HUMAN,” and mission, “Human Sustainable Architecture,” emphasize designs that respect both individuals and the environment.

*Mit über 20 Jahren Erfahrung und einer globalen Präsenz ist die A++ Gruppe ein international anerkanntes Netzwerk, bestehend aus 50 Unternehmen, die sich auf Masterplanung, Architektur, Interior Design, Produktdesign, Beschaffung und Luxus Branding spezialisieren. Unter der Leitung von Paolo Colombo als Managing Director und Carlo Colombo als Creative Director verbindet die Gruppe eine Leidenschaft für Architektur mit einer unternehmerischen Vision, wodurch sie innovative sowie exklusive Projekte weltweit entwickelt. Als führendes Unternehmen im Bereich Branded Real Estate verpflichtet sich die A++ Gruppe dazu, Räumlichkeiten zu schaffen, die Luxus neu definieren. Ihre Philosophie “WE ARE HUMAN” und ihre Mission “Human Sustainable Architecture” betonen Design, welches sowohl den Menschen als auch die Umwelt respektiert.*

Mira Developments is renowned for its collaborations with leading lifestyle brands and delivering fully furnished homes. Whether it is a high-rise residence or an ultra-luxurious villa in a gated community, every Mira Developments property is turnkey-ready. From designer interiors and premium household appliances to hotel-style services - everything is thoughtfully provided. All you need to do is bring your luggage and settle in.

*Mira Developments ist bekannt für seine Zusammenarbeit mit führenden Lifestyle-Marken und für die Schaffung komplett möblierter Häuser. Ob es sich um einen Wolkenkratzer oder eine Ultra-Luxus-Villa in einer unabhängigen Wohnanlage handelt, jedes Mira Developments-Projekt ist schlüsselfertig. Von Designer-Innenräumen bis hin zu Premium-Geräten und hotelähnlichen Annehmlichkeiten ist alles sorgfältig gestaltet. Alles, was Sie tun müssen, ist, Ihr Gepäck mitzubringen und sich einzurichten.*





ARCHITECTS

*A design by the prestigious A+++*

Ein Entwurf der renommierten A+++

POST  
HOTEL & RESIDENCES

BY



DEVELOPED BY



MAIL  
INFO@POSTBYELIESAAB.COM

PHONE  
+41 91 291 30 97

GOTTHARDSTRASSE 69  
6490 ANDERMATT, SWITZERLAND

[POSTBYELIESAAB.COM](http://POSTBYELIESAAB.COM)

This publication is for illustrative purposes only. Some of the images shown in the document were developed with computer graphics technology (photorealistic rendering), with reference to details of the façade and elevations, common areas, private areas and interiors of the apartments, for the sole purpose of presenting a plan for future realization and/or the various, potential solutions following user customization. All furniture and art are represented for marketing and rendering purposes only. For this reason, all information, descriptions and images are purely indicative and subject to change. This document has no contractual value and is not binding on the investment company that owns the rights and information reported. The reproduction and the partial use of texts and images is forbidden without prior authorization.

POST  
HOTEL & RESIDENCES

BY

  
ELIE SAAB

[POSTBYELIESAAB.COM](https://www.postbyeliesaab.com)